

# SCHEDULE OF PORT CHARGES

EFFECTIVE FROM 1 JULY 2023





# GENERAL CONDITIONS

**This Schedule of Port Charges sets out fees for some of the services provided by TasPorts and is effective from 1 July 2023.**

The Schedule of Port Charges applies to standard services offered by TasPorts in the absence of any other agreement with Tasmanian Ports Corporation Pty Ltd to the contrary. Fees for non-standard services will be applied in accordance with any Port Services Agreement in place with the relevant customer. If a Port User's access request involves new capital investment then the price information in the Schedule of Port Charges document may require adjustment.

TasPorts may issue a revised Schedule of Port Charges at any time.

The following notice periods will apply:

- For revisions of pricing taking effect on 1 July of any year, TasPorts will endeavour to publish the revised schedule by 31 May in that year.
- Revisions of pricing within a financial year will be advised to Port Users 60 days before the date of effect and published with at least 30 days' notice of effect.

All services provided by TasPorts including, but not limited to, the services referred to in this Schedule are provided subject to the Standard Terms and Conditions of Port Access which are available on the TasPorts website ([www.tasports.com.au](http://www.tasports.com.au)).

Except to the extent implied by law, no representations or warranties are made by TasPorts as to the content, accuracy or completeness of the information contained in this Schedule or to the interpretations, deductions or conclusions, inferred from or arising out of this Schedule other than the amount of the fees.

All charges are exclusive of GST.

## DEFINITIONS

<b>\$ EX GST</b>	Australian Dollars (excluding GST)
<b>CAP</b>	Maximum payable
<b>GA</b>	General Aviation
<b>GRT</b>	Gross Registered Tonnage
<b>GST</b>	Goods and Services Tax
<b>LOA</b>	Length Over All
<b>PEC</b>	Pilot Exemption Certificate
<b>POA</b>	Price On Application
<b>Secondary Port Areas</b>	Refers to the ports of Coles Bay, Port Arthur and/or Grassy/Naracoopa King Island
<b>TEU</b>	Twenty foot (20') Equivalent Units (6.1 metres)
<b>VTS</b>	TasPorts Vessel Traffic Services Centre (VTS Authority in accordance with the provisions of Marine Order 64)



# CONTENTS

<b>01 WHARFAGE</b>	<b>18 OTHER SERVICES &amp; FEES</b>
<b>04 PILOTAGE</b>	18 Stevedoring
<b>07 TONNAGE</b>	18 Lines (Port of Grassy)
<b>08 LAY-UP</b>	18 Receival and Despatch (Port of Grassy)
<b>09 TOWAGE</b>	18 Casual Storage
09 Rates of Hire	18 Berth Set Up for Special Arrangements
09 Additional Period of Towage	18 Wharf Clean Up
10 Relocation Charges	18 Fresh Water
10 General Charges	19 Labour
<b>11 CRUISE VESSELS</b>	19 Weighbridge
11 Wharfage Infrastructure Levy	19 Quarantine – Available Burnie, Bell Bay and Hobart
11 Pilotage	19 Non-cargo Liquid Transfer
12 Tonnage	19 Administration
12 Berth Services and Occupancy	20 Parking Permits - Hobart
13 Aborted Calls, Cancellations and Late Change Charges	20 Traffic Management (Per Officer)
<b>14 OTHER CHARGES - EQUIPMENT</b>	20 Oil Spill Clean Up
14 Portable Buildings	20 Other
14 Equipment and Plant Hire	<b>21 SECURITY</b>
15 King Island Only	<b>22 SLIPWAYS</b>
15 Floating Plant Hire (wet hire only)	22 Slipway Charges
16 Work Boat/Dumb Barge Hire (dry hire only)	23 Other Charges - Domain Slip
<b>17 OTHER CHARGES - ELECTRICITY</b>	<b>24 DEVONPORT AIRPORT - AERONAUTICAL</b>
	24 Landing Fees
	24 Aircraft Parking Fees
	25 Aircraft Storage Fees
	<b>26 PORT AND OFFICE LOCATIONS</b>

Front cover: Port of Burnie



# WHARFAGE

Wharfage charges apply to all cargoes, loaded on or discharged from vessels or between vessels, while alongside TasPorts' berths, and are payable at the default rate specified for the relevant cargo or by the rate per tonne, cubic metre, or kilolitre specified for the relevant cargo, (whichever is the greater).

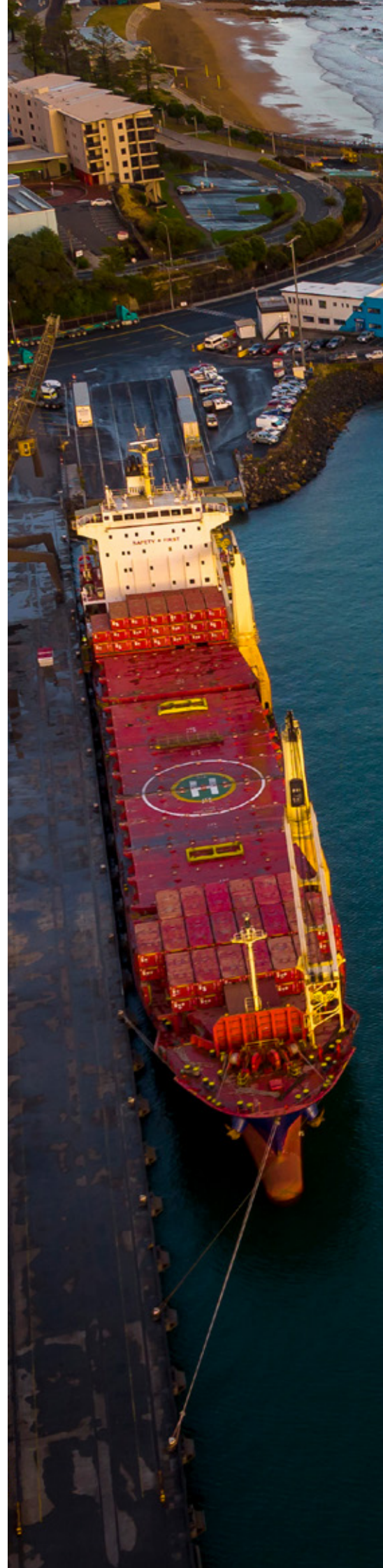
All cargo is to be declared by manifest by voyage/trip and must note all units of measure specified for all relevant cargo in the table below.

Manifests to be forwarded to [wharfage@tasports.com.au](mailto:wharfage@tasports.com.au) within two (2) business days of vessel departure unless otherwise agreed by the parties.

Specialised project/heavy lift cargo may require price on application.

**\$ EX GST**

CARGO		
General cargo (non containerised)	per tonne or cubic metre (minimum charge is one tonne or cubic metre or linear metre whichever is greater)	4.92
Bulk cargo (wet or dry)	per tonne/kilolitre /cubic metre	3.40
Petroleum products	per kilolitre/tonne	4.31
Hydrogen derived fuel products	per kilolitre/tonne	4.31
Liquid bulk - Fire Safety Infrastructure Levy	per kilolitre	1.06
Hydrogen derived fuel products - Safety Infrastructure Levy	per kilolitre/tonne	POA
CONTAINERISED CARGO*		
Full containers (excluding King and Flinders islands)	per TEU*	97.28
Full containers (King and Flinders islands only)	per TEU*	120.80
Empty containers	per TEU*	27.74





# WHARFAGE

\$ EX GST

## TRAILERS UNDER LOAD (EXCLUDING PRIME MOVERS)

20 foot (6.1 metres) (excluding King and Flinders islands)	each	97.28
40 foot (12.2 metres) (excluding King and Flinders islands)	each	194.56
20 foot (6.1 metres) (King and Flinders islands only)	each	120.80
40 foot (12.2 metres) (King and Flinders islands only)	each	241.60
Non standard length trailers (greater than 5 tonne)	per linear metre	33.14

## TRAILERS EMPTY (EXCLUDING PRIME MOVERS)

Empty trailer	per linear metre	13.76
---------------	------------------	-------

## LIVESTOCK IN TRAILER UNITS

20 foot (6.1 metres)	single and multi deck, per unit	103.69
40 foot (12.2 metres)	trailer, per unit	207.38
Empty livestock trailer return	per linear metre	6.77

## LIVESTOCK (NOT IN TRAILERS)

Small animals (e.g. calves less than 9 months old, sheep, rams and pigs) (excluding Flinders Island)	per head	2.48
Small animals (e.g. calves less than 9 months old, sheep, rams and pigs) (Flinders island only)	per head	1.13
Large animals (e.g. cattle greater than 9 months old and horses)	per head	4.81

## STOCK FACILITY LEVY

Small animals (e.g. calves less than 9 months old, sheep, rams and pigs)	per head	0.63
Large animals (e.g. cattle greater than 9 months old and horses)	per head	1.25



# WHARFAGE

\$ EX GST

## PRIME MOVERS, HEAVY RIGID TRUCKS, BUS AND WHEELED FARM EQUIPMENT<sup>†</sup> (<2.5M WIDE)

Prime mover and / or loaded trailer, machinery and equipment	per linear metre	33.03
--	------------------	-------

## VEHICLES, CARAVANS AND BOX TRAILERS

Motor vehicles up to 5 tonne and 5.9m in length	each	49.86
Motor bikes (incl. bikes and All Terrain Vehicles)	each	15.96
Motor homes, coaster buses, caravans, recreational boats, horse floats and box trailers (up to 5 tonne) <sup>‡</sup>	per linear metre	13.60

## BULK FUEL

Fuel in drums	per 200 litres	2.76
---------------	----------------	------

## TASPORTS INFRASTRUCTURE LEVY (Devonport 5 West RoRo Only)

Devonport RoRo Ramp Levy	per linear metre (loading/discharging)	7.01
--------------------------	--	------

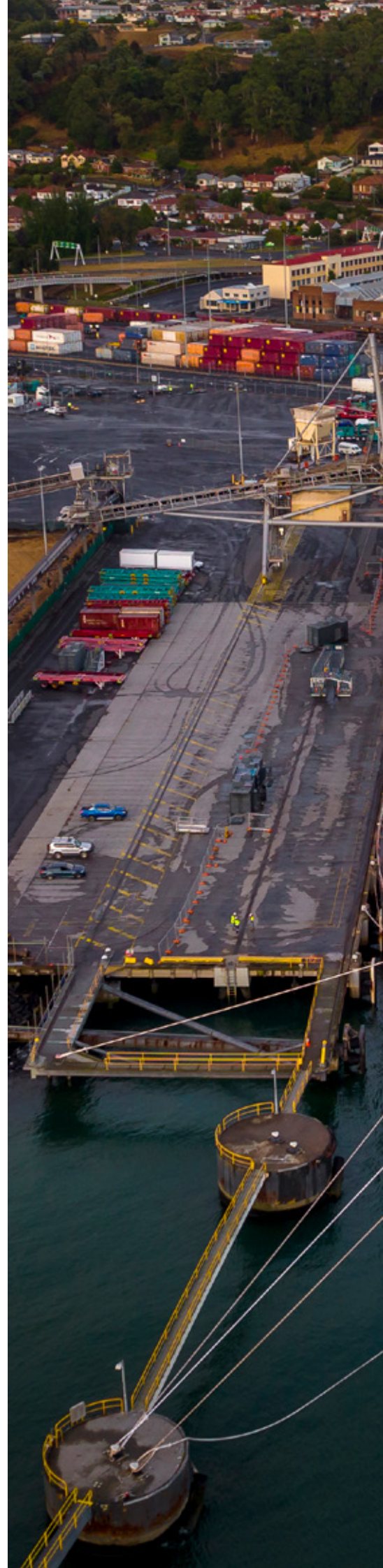
## ADDITIONAL ADMINISTRATION LEVY

Administration fee (to be issued to the party forwarding the manifest to TasPorts)		120
(e.g. late manifest and/or manifests requiring significant changes)		

### NOTES:

- \* TEU = Twenty foot (20') equivalent units (6.1 metres). A forty foot (40') (12.2 metres) container will constitute 2 x TEU for charging purposes. TEU's "out of gauge" will be charged at the general cargo rate. Any cargo not otherwise classified will be charged at the general cargo rate.
- † Prime mover/empty trailer combination to be treated as separate units i.e prime mover and empty trailers. Overwidth units to be considered as General Cargo. Dimensions to be provided.
- ‡ Includes towing vehicle length.

TasPorts does not charge wharfage fees for Port Latta, which is a private port or for Bell Bay Berth 1 and Hobart Risdon Berth which are private berths.





# PILOTAGE

A Pilot is required for all vessels exceeding 35 metres in length overall (LOA) whilst in a port pilotage area, unless an Exempt Master is in charge of the vessel.\*

Pilotage charges are comprised of a fixed charge plus a charge per Gross Registered Tonnage (GRT) as recorded on the relevant vessel's certificate, covering pilot services and pilot launch at the ports of Bell Bay, Burnie, Devonport and Hobart. The GRT charge will only apply to vessels greater than 9,999 GRT.

Pilotage charges appearing on this and the following 2 pages do not apply to cruise vessels. Please refer to the section on cruise vessels for relevant pilotage charges.

In addition to the standard pilotage charges referred to above, pilotage transfers and road transfers charges may be applicable as set out below.

A scheduled movement cannot come forward between 2200-0600 hours, after the schedule has been published for the day.

Please also refer to TasPorts' Berthing Priority Policies and Procedures on the TasPorts website. This document includes a Double Berthing Policy, in which TasPorts may offer an incentive to shipping operators to consider a 'Double Berthing' option.

**\$ EX GST**

## PILOTAGE ALL VESSELS (EXCLUDING CRUISE SHIPS)\*\*

Fixed charge (all vessels)	per pilotage	2,268
GRT charge (to vessels with GRT greater than 9,999 GRT)	per pilotage per GRT	0.140

## INTER-BERTH TRANSFERS/SHIFTS

Transfer charges apply to all movements of vessels over 35 metres in length within a port pilotage area	per shift	2,268
Inner Anchorage Transfers (fee for transfer of pilot to/from the vessel)	per transfer each way	599

## PILOTAGE TRANSFERS

Charges for over carry or transfer of pilots will be priced on application.		POA
Pilot transfer for Secondary Port Areas and Port Latta by launch	per hour	699

## ROAD TRANSFERS

Pilot transfers Bell Bay to Launceston	per transfer each way	130
Pilot transfers Selfs Point to Hobart	per transfer each way	66
Pilot transfers Risdon to Hobart	per transfer each way	66



# PILOTAGE

\$ EX GST

## PILOTAGE EXEMPTION CERTIFICATE AND RENEWAL CHARGE

The charges apply to all Masters that apply and successfully complete the requirements to become an Exempt Master for a particular zone.

Initial Pilotage Exemption Certificate	per certificate per zone	731
Renewal of Pilotage Exemption Certificate	per renewal per zone	366
Renewal of Pilotage Exemption Certificate - low risk vessel e.g. super yachts	per renewal per zone	POA
Pilotage Master Audit Charge†	per "check pilotage trip"	‡

## PILOT DELAYS AND EXTENDED PILOTAGE

A charge applies where a Pilot is delayed by more than one hour from booked time or where pilot services extend longer than four (4) hours in duration	per hour	377
Pilot administration function associated with pilotage including vessel audits at berth	per hour	377

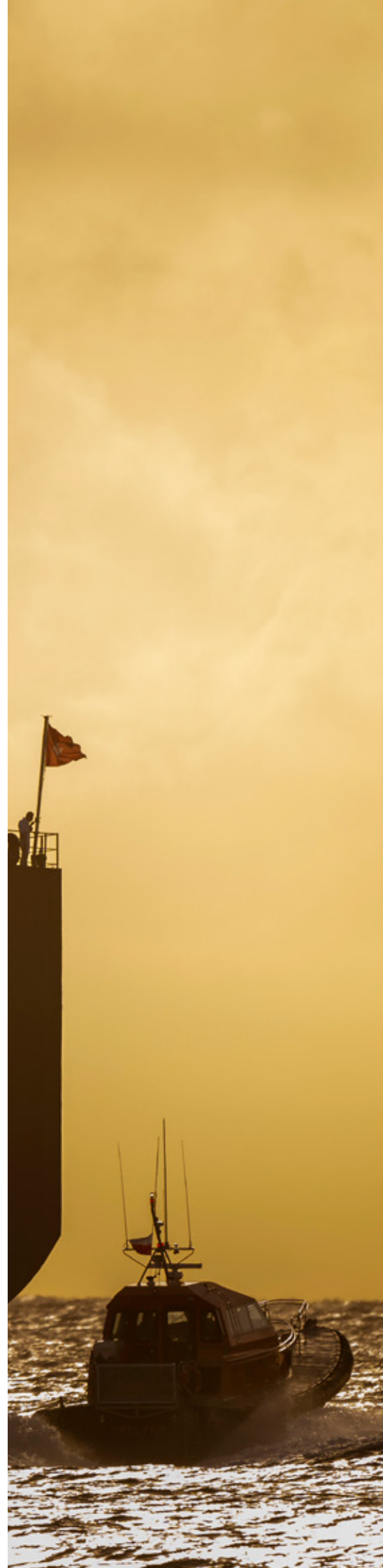
Charge also applies for other pilot services (excludes pilot launch)

## PILOTAGE CANCELLATION CHARGE - PORT CALL

A cancellation charge applies when a vessel movement is cancelled within six (6) hours of the time for which a Pilot has been ordered at a port, but prior to a Pilot commencing transfer to a vessel		572
---	--	-----

## PILOTAGE LATE CHANGE FEE

A late change fee will be applied where a vessel movement is changed within six (6) hours of the time for which a Pilot has been ordered at a port, but prior to a Pilot commencing transfer to a vessel		572
--	--	-----







# PILOTAGE

\$ EX GST

## ABORTED PILOTAGE - PORT CALL

A cancellation charge applies when a vessel movement is aborted after the Pilot has boarded or commenced transfer to vessel. This includes movements that have been aborted due to extreme adverse weather events or for other safety reasons.

‡

## MISCELLANEOUS MARINE OPERATIONS PROJECTS (e.g. aquaculture projects)

Customised quotations can be developed for projects and work that requires marine operations teams (e.g. Pilots, Tugs etc). Quotations will take into consideration the cost of the resource, use of any assets and any other ancillary costs e.g. including but not limited to accommodation and travel.

POA

### NOTES:

- \* There are also limited exemptions in the relevant regulations for naval, military and air force vessels (except in relation to Zone B) and any other specified vessel or class of vessels determined by MAST in writing to be exempt.
- \*\* A pilotage exemption run or renewal check run is considered a full pilotage job.
- † A Pilotage Master Audit Charge applies when an Exempt Master requires a "Check Pilot" to undertake onboard practical assessment. Pilotage Master Audits are for authorised movements only which must be booked in accordance with normal booking procedures. An applicant attempting to obtain an initial pilotage exemption or a renewal of PEC (including low risk vessels) pays the Pilotage Master Audit charge.
- ‡ Full Pilotage charge to be applied (fixed and GRT charge).

# TONNAGE

Vessel Tonnage charges apply to all vessels exceeding 35 metres in length overall (LOA) that enter TasPorts' port pilotage areas (including shipping channels). Charges apply for the first day or part thereof with a reduced charge for each subsequent 24 hour period or part thereof – except for Port Latta, where a different tonnage charge applies by reason of it being a privately operated port and the different costs incurred by TasPorts at that port.

The Vessel Tonnage charge covers those TasPorts responsibilities under the Deed of Agreement (the Deed) with Marine and Safety Tasmania and the Crown (Environmental Protection Authority), including provision of channel related services. These include responsibilities related to regulatory functions under the Deed including but not limited to Harbour Master responsibilities, all navigation related matters including navigation aids and provision of channels (including maintenance dredging), emergency response, environmental protection, port traffic control services, communications and port security issues.

Please also refer to TasPorts' Berthing Priority Policies and Procedures on the TasPorts website. This document includes a Double Berthing Policy, in which TasPorts may offer an incentive to shipping operators to consider a 'Double Berthing' option.

**\$ EX GST**

## STATEWIDE (EXCLUDING CRUISE SHIPS & PORT LATTA)\* ‡

For the first day – all vessels > 90m LOA	per GRT	0.721
For the first day – all vessels ≤ 90m LOA	per GRT	0.392
For each subsequent day – all vessels	per GRT	0.182

## PORT LATTA†

All vessels > 35m LOA	per GRT per visit	0.158
-----------------------	-------------------	-------

### NOTES:

- \* Time period commences when vessel is alongside. For vessels only calling at anchor, only first day charge applies and time period commences when vessel reaches anchorage position. TasPorts' Statewide tonnage charge does not apply to Port Latta, by reason of it being a privately operated port and the different costs incurred by TasPorts at that port. Additional equipment, plant and labour requested for vessel operations that are not directly related to the berthing of the vessel will incur charges at the applicable rate. Security charges will be charged as per the Security Charges section.
- ‡ If a Lay-Up Fee is applied, the Tonnage Fee for the first or subsequent days is not applicable.
- † Applies upon vessel entry into the Port Pilotage Area for Port Latta. TasPorts' tonnage charge for Port Latta is separate and additional to any charges by or on behalf of the private port operator. The commencement date for this charge at Port Latta is yet to be determined at the time of publication and will be separately advised.



# LAY-UP

Use of TasPorts' berths for lay-up is at the discretion of TasPorts.

Lay-up use includes:

- mooring at a berth by vessels not intending to transfer cargo
- mooring at a berth by vessels after completion of cargo operations

**\$ EX GST**

## COMMERCIAL VESSELS<sup>‡</sup>

Payment of lay-up charge does not provide a guarantee of, or priority use of, a berth, mooring or wharf except to the extent granted by TasPorts	per GRT / per day	0.182
Short-term minimum daily charge - all commercial (non cargo) vessels <sup>#</sup>	first day and subsequent days	1,175
Lay-up greater than 14 days	subject to availability	POA

Lay-ups for 14 days or less are by prior arrangement and upon application through TasPorts' booking system

**FEE PER DAY  
(\$ EX GST)**

**FEE PER WEEK  
(\$ EX GST)**

## RECREATIONAL VESSELS<sup>\*\*</sup>

Vessels up to 15 metres	67	163
Vessels - 16 to 20 metres	96	308
Vessels - 21 to 35 metres	127	482
Super Yachts		POA

**FEE PER ANNUM  
(\$ EX GST)**

## KINGS PIER MARINA BERTHS

Berth - 10 metres	6,390
Berth - 12 metres	8,254
Berth - 14 metres	10,437
Berth - 15+ metres	11,289

**\$ EX GST**

## FISHING VESSELS (LESS THAN 35M LOA)

Visiting fishing vessels	Per 24 hours or part thereof	102
Annual fishing vessel registration		POA

### NOTES:

- <sup>‡</sup> Lay-up minimum charge applies regardless of LOA and if applied, the Tonnage Fee for the first or subsequent days is not applicable. TasPorts' lay-up charges do not apply to Port Latta, Bell Bay Berth 1 and Hobart Risdon Berth.
- <sup>#</sup> All commercial vessels and non cargo vessels at a TasPorts berth regardless of LOA. Anchorage greater than 24 hours will be POA.
- <sup>\*\*</sup> No fee charges for recreational vessels visiting King Island, Flinders Island, Strahan, and Stanley.

# TOWAGE

TasPorts operates harbour tugs, which are available to provide towage services to the ports located at Bell Bay, Burnie, Devonport, Hobart, Port Latta and Stanley. TasPorts Towage offers a range of services, including harbour towage, emergency towage and contract towage for specialist jobs.

Refer to TasPorts' website for TasPorts' Reference Documents and Forms (including Standard Conditions for Towage and Other Services) and the Ports Procedures Manual for further information, including in relation to tug requirements.

Please also refer to TasPorts' Berthing Priority Policies and Procedures on the TasPorts website. This document includes a Double Berthing Policy, in which TasPorts may offer an incentive to shipping operators to consider a 'Double Berthing' option.

## RATES OF HIRE

Hire Rate per tug is calculated as per below Towage tables (Base Rate plus GRT Rate) for handling a vessel within a three (3) nautical mile radius of the relevant berth. For the ports of Burnie, Devonport, Port Latta and Stanley, this charge is for the first 2 hours. For the ports of Bell Bay and Hobart, this charge is for the first 2.5 hours.

Hire Rate period of towage commences when a tug begins service.

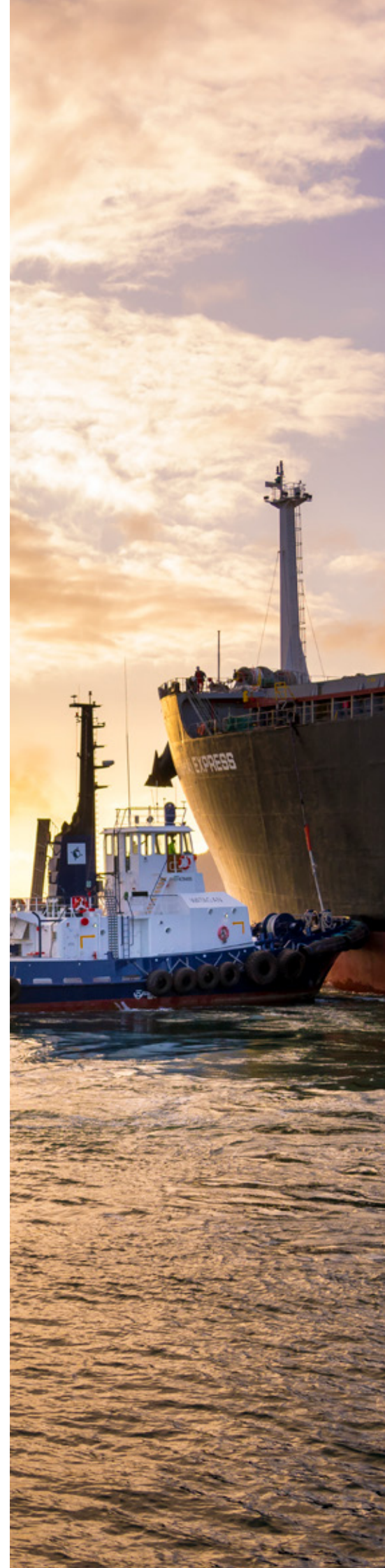
Tug requirements for the next day's shipping must be confirmed with TasPorts VTS by 1600 hrs. A scheduled movement cannot come forward between the hours of 2200-0600.

**\$ EX GST**

<b>HIRE RATE (PER TUG)</b>	
Base Rate	1,496
GRT Rate	0.503
Minimum Hire Rate	6,472
Maximum Hire Rate	13,716

## ADDITIONAL PERIOD OF TOWAGE

Additional period of towage Hire Rates will be charged at 25% of the applicable Hire Rate per tug, per 60 minutes, or part thereof, once the initial Hire Rate period has expired.





# TOWAGE

## RELOCATION CHARGES

If an operational requirement requires a tug with specialist capability of specific bollard pull, a relocation charge will apply if that vessel has to be brought in from another port.

\$ EX GST

RELOCATION CHARGES (TO/FROM PORT)				
	STANLEY/ PORT LATTA	BURNIE	BELL BAY	DEVONPORT
Devonport	6,273	3,146	3,790	-
Bell Bay	9,718	6,305	-	3,790
Burnie	3,754	-	6,305	3,146

## GENERAL CHARGES

\$ EX GST

<b>Vessels not under power (Dead Ship)</b>	An additional 50% to the applicable rate will be charged	
<b>Escort</b>	100% of the applicable rate per hour	
<b>Cancellation or deferment</b>	A Cancellation Fee (per tug) will be charged when towage is cancelled or deferred within six (6) hours of the time for which a tug service has been ordered	2,500
<b>Late order for towage</b>	Where tugs are ordered with less notice than six (6) hours, a Late Order Fee (per tug) will be charged	2,500

### STANDBY AND/OR PUSHING UP THE VESSEL AT BERTH

Where tugs are ordered to stand by to assist a vessel (e.g. pushing up during severe weather), the following charges per tug will apply:

<b>Assisting the vessel (crew on standby on board the tug at the tug berth or tug in attendance standing by the vessel)</b>	100% of the applicable Hire Rate
<b>Fuel surcharge</b>	A fuel surcharge is charged per tug engaged. This surcharge shall be reviewed monthly and varied accordingly
<b>Sundry and special services</b>	Charges for sundry and special services not otherwise covered above are subject to negotiation

# CRUISE VESSELS

## WHARFAGE INFRASTRUCTURE LEVY - CRUISE VESSELS $\geq 70,000$ GRT

A Wharfage Infrastructure Levy will apply for all large cruise vessels of 70,000 Gross Registered Tonnage (GRT), or greater. This levy applies for port calls only and charged per GRT per visit, at the ports of Bell Bay, Burnie, Devonport and Hobart.

**\$ EX GST**

WHARFAGE INFRASTRUCTURE LEVY CRUISE VESSELS $\geq 70,000$ GRT		
Wharfage Infrastructure Levy	per GRT	0.275
Wharfage Infrastructure Levy	CAP	32,887

## PILOTAGE

A Pilot is required for all vessels exceeding 35 metres in length overall (LOA) whilst in a port pilotage area, unless an Exempt Master is in charge of the vessel. Pilotage charges comprise a fixed charge plus a charge per gross registered tonnage (GRT), covering pilot services and pilot launch at the ports of Bell Bay, Burnie, Devonport and Hobart. The GRT charge will only apply to vessels greater than 9,999 GRT. For Secondary Port Areas the standard pilotage charges apply as above and pilot transfer charges will apply.

**\$ EX GST**

PILOTAGE			
Fixed charge all cruise vessels		per pilotage	2,268
GRT charge cruise vessels	>9,999 GRT	per pilotage per GRT	0.140
PILOT DELAYS AND EXTENDED PILOTAGE			
A charge applies where a Pilot is delayed by more than one hour from booked time or where pilot services extend longer than four (4) hours in duration.		per hour	377
EXTENDED PILOTAGE - EXPEDITION CRUISE			
In addition to the fixed pilotage charge, an hourly rate will apply where a Pilot is attending to a vessel (including transfer to/from) for longer than four (4) hours in duration (Secondary Port Areas only).	$\leq 9,999$ GRT	per hour	377

PILOT TRANSFERS SECONDARY PORT AREAS*			
Costs associated with over carry or transfer of a pilot to a Secondary Port Area will be charged on a cost recovery basis for all cruise vessels.			
Pilot launch	Ex/To Port Arthur	per transfer	4,444
	Ex/To Coles Bay	per transfer	8,833
Plane	Ex/To Sydney	per transfer	457
	Ex/To Melbourne	per transfer	343
Road	Ex/To Port Arthur $\leq 9,999$ GRT	per transfer	1,192
	Ex/To Port Arthur $> 9,999$ GRT	per transfer	438
	Ex/To Coles Bay $\leq 9,999$ GRT	per transfer	1,793
	Ex/To Coles Bay $> 9,999$ GRT	per transfer	662

### NOTES:

\* Pilotage and transfer charges for other Secondary Port Areas not specified above will be charged on a POA basis. Method of transfer will be determined at TasPorts' discretion and may not be advised until 24 hours prior to scheduled call.





# CRUISE VESSELS

## TONNAGE\*

Vessel Tonnage charges apply to all vessels exceeding 35 metres in length overall (LOA). Charges apply for the first day or part thereof with a reduced charge for each subsequent 24 hour period or part thereof. Full reference of TasPorts' Tonnage charge can be viewed on page 7 of the Schedule of Port Charges.

**\$ EX GST**

### BELL BAY, BURNIE, DEVONPORT AND HOBART

For the first day	per GRT	0.384
For each subsequent day	per GRT	0.182

#### NOTES:

\* Time period commences when vessel is alongside. For vessels only calling at anchor at Bell Bay, Burnie, Devonport and Hobart, only first day charges apply.

## BERTH SERVICES AND OCCUPANCY†

A flat fee Berth Services and Occupancy charge applies for all cruise vessels calling at Hobart, Burnie, Devonport and Bell Bay. The charge covers the use of the berth, terminals, services to support berth set-up and passenger disembarkation/embarkation including gangways (and equipment to position gangways), Landside Restricted Zone fencing, portable buildings to support regulated vessel arrangements, utility connections/disconnections and associated labour.

**\$ EX GST**

### BELL BAY, BURNIE, DEVONPORT AND HOBART

Cruise vessels	>9,999 GRT	per visit	12,986
Expedition cruise vessels	≤9,999 GRT	per visit	4,914

#### NOTES:

† Additional equipment, plant and labour requested for vessel operations that are not directly related to the berthing of the vessel will incur charges at the applicable rate. Security charges will be charged as per the Security Charges section.

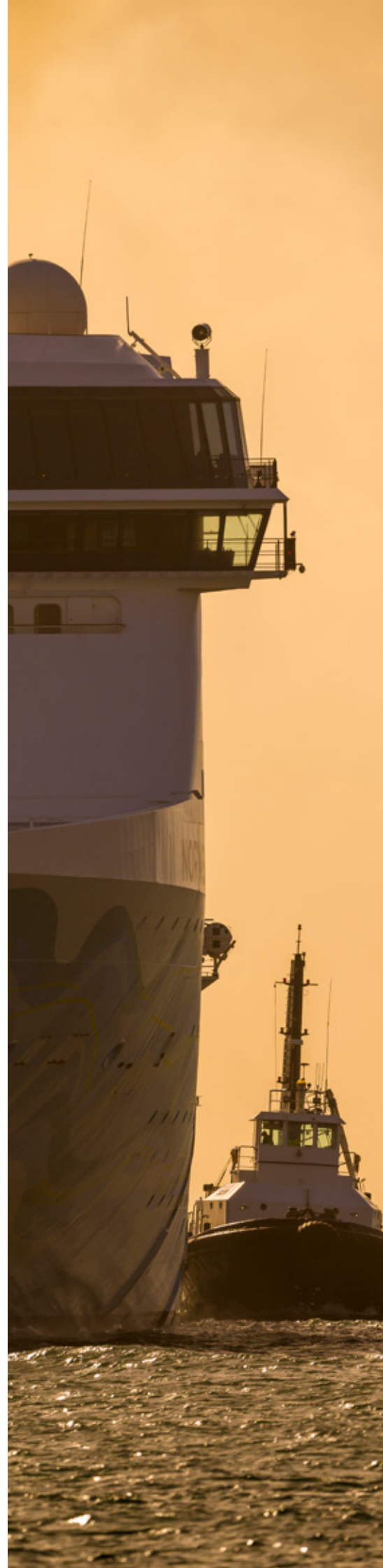
# CRUISE VESSELS

## ABORTED CALLS, CANCELLATIONS AND LATE CHANGE CHARGES

\$ EX GST

ABORTED CALLS, CANCELLATIONS AND LATE CHANGE (PILOTAGE) CHARGES		
Pilotage cancellation charge - port call	A cancellation charge applies when a vessel movement is cancelled within six (6) hours of the time for which a Pilot has been ordered at a port, but prior to a Pilot commencing transfer to a vessel	572
Aborted pilotage charge - port call	A charge applies when a vessel movement is aborted after the Pilot has boarded or commenced transfer to the vessel. This includes movements that have been aborted due to extreme adverse weather events or for other safety reasons	2,268
Aborted pilotage cancellation charge - Secondary Port Areas	A cancellation charge of 50% of the applicable pilotage rate will be charged when a vessel call at a Secondary Port Area is aborted or cancelled once the Pilot has departed from their home port	
Pilotage late change fee	A late charge fee will be applied where a vessel movement is changed within six (6) hours of the time for which a Pilot has been ordered at a port, but prior to a Pilot commencing transfer to a vessel	572

In addition to the above, charges may apply as per *TasPorts' Cruise Ship Booking Cancellation Policy* for calls cancelled within 22 months prior to the booked call.





# OTHER CHARGES - EQUIPMENT

\$ EX GST

PORTABLE BUILDINGS		
Portable Amenities Unit	per 24 hour period or part thereof	384
Portable Office/Security - inclusive of power where available	per 24 hour period or part thereof	141
EQUIPMENT AND PLANT HIRE		
Ships Gangway Hire (Gangway Only) ≤ 10m	per 24 hour period or part thereof	167
Ships Gangway Hire (Gangway Only) > 10m	per 24 hour period or part thereof	268
Passenger Boarding System including 14m gangway (cruise ships)	per 24 hour period or part thereof	669
Bulk Commodity Hopper	per tonne or cubic metre (whichever is greater)	0.59
Dust Collector (including power)	per 24 hour period or part thereof	2,243
Charges for the transport, placing and removing of equipment will be in accordance with the prevailing mechanical equipment and labour hire rates, as specified in this Schedule.		
The following rates apply if the equipment is available (wet hire only). Hire charge rates for the equipment listed during normal business hours of 0730-1630 are as follows. Out of hours rates available upon request.		POA*
Crane hire (10 tonne or less). Minimum of four (4) hour hire on King Island	per hour or part thereof	192
Crane hire (above 10 tonnes). Minimum of four (4) hour hire on King Island	per hour or part thereof	235
Forklift hire (10 tonnes and above)	per hour or part thereof	192
Forklift hire (5-9 tonnes)	per hour or part thereof	111
Telehandler	per hour or part thereof	160
Elevated work platform	per hour or part thereof	346
Pressure cleaner	per 24 hour period or part thereof	204
Branson tractor	per hour or part thereof	97
Sweeper	per hour or part thereof	167
Tip truck	per hour or part thereof	204
Medium size portable fender hire	per 24 hour period or part thereof & other charges if applicable <sup>†</sup>	175
Large size portable fender hire	per 24 hour period or part thereof & other charges if applicable <sup>†</sup>	250
Safety cage	per 24 hour period or part thereof	101
Remotely Operated Vehicle	equipment per hour & labour charge <sup>‡</sup>	111

# OTHER CHARGES - EQUIPMENT

**\$ EX GST**

## KING ISLAND ONLY

The following rates apply if the equipment is available (wet hire only). Hire charge rates for the equipment listed during normal business hours of 0730-1630 are as follows. The Port of Grassy, King Island, is closed on Picnic Day, Easter Good Friday, ANZAC Day and Christmas Day. Out of hours equipment rates apply for these port closed days and are available on request.

Prime mover	per hour or part thereof	149
20 ft and 40 ft side loader (trailer only)	per hour or part thereof	137
CAT wheel loader	per hour or part thereof	137
Skel trailer	per 24 hour period or part thereof	45
Terberg	per hour of part thereof	162
CAT Track Skid Steer and attachments	per hour of part thereof	135
Fire Fighting Pump - dry hire (dust suppressions etc.)	per hour of part thereof	43
Transport Dangerous Goods surcharge (eg. fuel, gas and explosives)	per container/ISO (empty/full)	108

**\$ EX GST**

## FLOATING PLANT HIRE (WET HIRE ONLY)

Launch hire (e.g. mooring line and life boat drills etc.)	per two (2) hour period	932
Pilot launch hire	per hour	1,242
Work Punt	per hour period or part thereof (4 hour minimum)	167
Work Boat	per hour period or part thereof (4 hour minimum)	388
Landing barge <i>Kulanda</i>	per eight (8) hour day or part thereof (8 hour minimum)	6,756

## FLOATING PLANT HIRE TERMS AND CONDITIONS

Cancellation or change within six (6) hours of the scheduled time shall incur a charge of 50% of the applicable rate for Launch, Work Punt and Work Boat.

A cancellation needs to be provided within five (5) working days to avoid the minimum charge being applied to Landing Barge *Kulanda*.

A scheduled movement cannot come forward between the hours of 2200-0600 after the schedule has been published for the day.



# OTHER CHARGES - EQUIPMENT

\$ EX GST

BARGE HIRE (DRY HIRE ONLY)#		
Drag-line Barge <i>TB Eldon</i> (North)	per 24 hour period or part thereof	942
Pile-driving Barge <i>TB Rufus</i>	per 8 hour period or part thereof	942
PDC60 Barge <i>TB Ossa</i> (South)	per 24 hour period or part thereof	942
<i>Massif Barge</i>	per 24 hour period or part thereof	1,250
Barge mobilisation fee inclusive of standard crew, overtime rates apply.		POA
Labour	As set out in the Other Services & Fees section of this Schedule of Port Charges	

## WORK BOAT/DUMB BARGE HIRE TERMS AND CONDITIONS

Prices are only a guide.

Contact TasPorts for a formal quote outlining your requirements.

### NOTES:

- \* If contractor call out required, contractor charges will apply plus 10%.
- † If install, removal, transport and/or repairs to any damage is required these will be on-charged to the customer at cost plus 10%.
- ‡ See other services labour.
- # Hire rates may vary subject to length of hire and location.

Equipment may not be available at all ports. Please contact TasPorts regarding equipment availability.

# OTHER CHARGES - ELECTRICITY

\$ EX GST

## ELECTRICAL SERVICES - SHIP RELATED CONNECTIONS/ DISCONNECTIONS AND ISOLATIONS

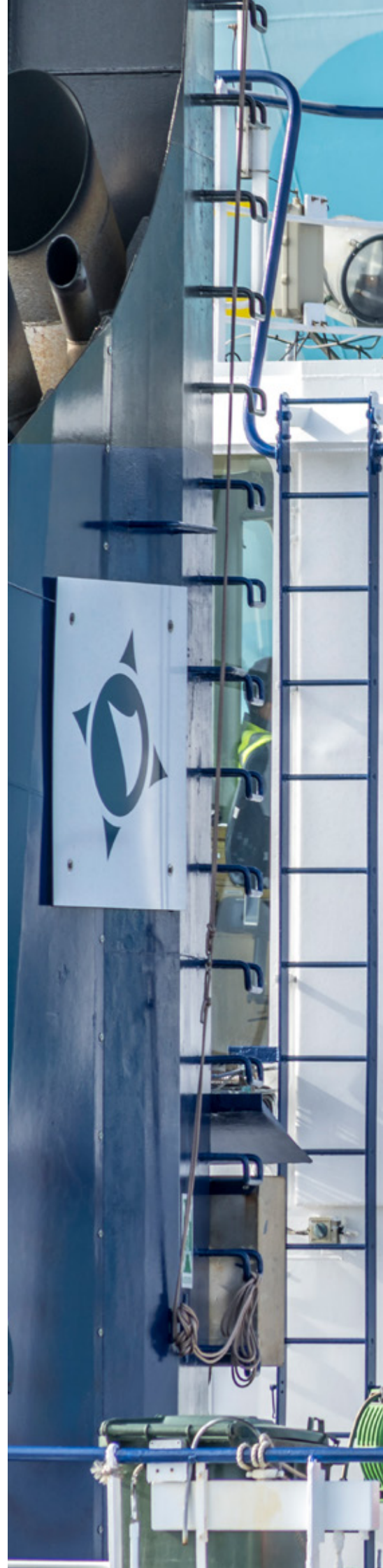
In hours 0730 - 1630, Monday - Friday	per connection/disconnection or isolation	194
Out of hours call out	per connection/disconnection or isolation	741

## ELECTRICITY

Metered supply	per kilowatt hour	0.42
----------------	-------------------	------

## Unmetered supply (per connection)

Single phase	per 24 hour or part thereof	25.12
Three phase	per 24 hour or part thereof	78.62
Refrigerated containers	per 24 hour or part thereof	66.77





# OTHER SERVICES & FEES

\$ EX GST

<b>STEVEDORING</b>		
<b>Stevedoring Licence fees</b>		
A stevedoring operator must be licensed by TasPorts to operate or undertake cargo handling activities within TasPorts' facilities. Days to be applied to be determined on application depending on port storage and stevedoring arrangements.	per 24 hour period or part thereof	397
<b>Stevedoring Charges (Flinders Island)</b>		
Stevedoring/management fee	per seven (7) hour period	937
	per four (4) hour period	534
	extra hours over and above seven (7), per hour	134
<b>Stevedoring Charges (Port of Grassy)</b>		
Stevedoring – fixed (including, two persons, management fee + equipment)	per seven (7) hour period	3,284
	per four (4) hour period	1,877
Stevedore (one person) – no stevedoring equipment required	per person per seven (7) hour period	802
	per person per four (4) hour period	458
Stevedoring – extra hours	per person per hour	114
Additional container forklift (not including operator)	per hour	151
Terberg (not including operator)	per hour	103
The Port of Grassy, King Island, is closed on Picnic Day, Easter Good Friday, ANZAC Day and Christmas Day. Stevedoring charges apply for these port closed days and are available on request.		
<b>LINES (PORT OF GRASSY)</b>		
Lines – in hours	per lines per person, two (2) hour period	123
Lines – out of hours	per lines per person, two (2) hour period	210
<b>RECEIVAL AND DESPATCH (PORT OF GRASSY)</b>		
Between 0730 and 1600, Monday to Friday (includes operator and forklift)	per 15 minutes or per forklift lift	67
Receival and despatch (with no equipment required)	per 15 minutes	31
<b>CASUAL STORAGE</b>		
Casual storage	per 100m <sup>2</sup> per week or part thereof	135
Casual storage – undercover	per 100m <sup>2</sup> per week or part thereof	250
<b>BERTH SET UP FOR SPECIAL ARRANGEMENTS</b>		
Dangerous Goods Class 1 – Berth set up for explosive vessels		386
<b>WHARF CLEAN UP</b>		
Per plant and equipment hire if utilised. If contractor call out required, contractor charges will apply plus 10%.	per sailing	254
<b>FRESH WATER</b>		
Connection/disconnection fee	per connection/disconnection	194
Supply	per kilolitre	2.19

# OTHER SERVICES & FEES

\$ EX GST

<b>LABOUR*</b>		
In hours 0730 – 1630, Monday – Friday	per hour or part thereof	97
Out of hours, Monday – Friday	per hour or part thereof	194
Weekends and Public Holidays	minimum charge plus per hour or part thereof	501 194
<b>WEIGHBRIDGE</b>		
Fee	per weigh	12.20
<b>QUARANTINE – AVAILABLE BELL BAY, BURNIE AND HOBART</b>		
Fumigations using recapture equipment (Bell Bay) <sup>†</sup>	per container	331
Quarantine fumigation pad hire (first day)	per day or part thereof	384
Quarantine fumigation pad hire (subsequent days)	per day or part thereof	225
Washbay under biosecurity directions (where available and where a pre approved arrangement with TasPorts is not in place)	per day or part thereof	499
Washbay (general purpose as classified by TasPorts)	per day or part thereof	388
<b>NON-CARGO LIQUID TRANSFER</b>		
Fuel bunkering and waste (permit required)	per litre	0.0067
Fire watch person petroleum vessels	minimum charge up to four (4) hours	848
	plus per hour or part thereof	212
Fuel bunkering is charged to the vessel for the provision of fuelling infrastructure and maintenance as well as a fee towards maintaining the fire fighting systems and capabilities		
<b>ADMINISTRATION</b>		
Late vessel booking fee (for bookings made within 72 hours of arrival time)		640
Additional administration levy – documentation penalty or service charge e.g. late manifest <sup>‡</sup>		120



# OTHER SERVICES & FEES

\$ EX GST

## PARKING PERMITS - HOBART#

Macquarie Point	per month or part thereof	220
Daily temporary	per day	48

## TRAFFIC MANAGEMENT (PER OFFICER)

In hours 0730 - 1630, Monday - Friday	per hour or part thereof	97
Out of hours, Monday - Friday	per hour or part thereof	194
Weekends and Public Holidays	minimum charge plus per hour or part thereof	501 194

## OIL SPILL CLEAN UP

Charged on the basis of full cost recovery plus 10%.  
TasPorts' plant and equipment is charged at the full hire rate.

## OTHER

Any other equipment, covered storage and areas of land for cargoes and port related uses	POA
--	-----

Unless otherwise specified or agreed, where there is an arrangement between TasPorts and a customer that TasPorts will incur costs on the customer's behalf, these costs will be on-charged to the customer plus 10%.

## NOTES:

- \* A labour charge may be charged for organised escorts that is not normal operational or maintenance.
- † Includes access to fumigation pad, use of fumigation equipment (Note: fumigator will add service fee to this base price).
- ‡ All wharfage cargo is to be declared by manifest by voyage/trip and should be forwarded to [wharfage@tasports.com.au](mailto:wharfage@tasports.com.au) within two (2) business days of vessel departure, unless otherwise agreed by the parties.
- # Subject to availability.

Services may not be available at all ports. Please contact TasPorts regarding the availability of services.



# SECURITY

\$ EX GST

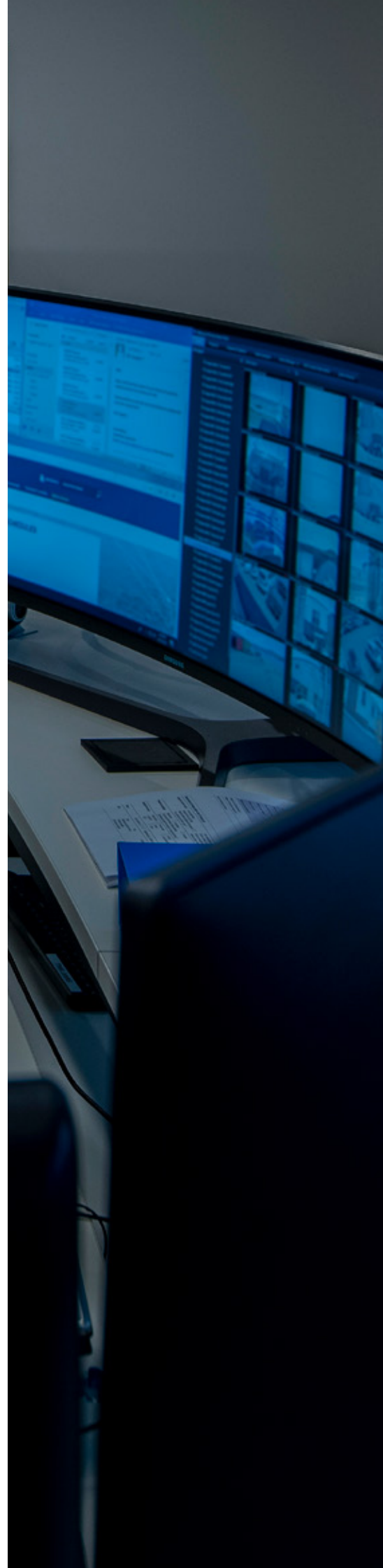
SECURITY		
Security/Screening Officer (minimum of four (4) hour charge applies)	per hour or part thereof	POA
Security Screening Equipment - passenger and hand luggage screening	per day or part thereof	2,107
Security Screening Equipment Van - checked baggage screening	per van, per day or part thereof	1,774
Under Wharf Security Sweep (visual inspection) - vessels with Waterside Restricted Zone (WRZ)	per vessel arrival	300
Temporary Access Card (TAC) for a MSIC not printed on an integrated access card	per card	32
TasPorts Site Access Pass (SAP) (non regulated sites but access card is required)	per card	126
Crew Identification Access Card (casual crew for domestic home port vessels inside security regulated port)	per card	126
Replacement TAC, SAP or Crew Identification Access Card (original card lost or damaged)	per card	32
Express postage and handling charges for all TAC, SAP and Crew Identification Access Cards	per card	8

## CANCELLATION AND AMENDMENTS

Security Officer services are charged at a minimum of four (4) hours for any service.

A cancellation charge of four (4) hours applies when security arrangements are cancelled within four (4) hours of start time for which they were booked.

Cancellation of screening equipment bookings less than six (6) hours prior to the equipment booking incurs a 20% cost of original booking period.





# SLIPWAYS

## SLIPWAY CHARGES (\$ EX GST)

LOCATION	HAUL OUT	RETURN TO WATER	HIRE (PER DAY)	POWER (PER DAY WHEN UTILISED)	CLEAN UP
<b>No. 1 Domain</b>	\$3,666 plus \$55 per metre in excess of 30 metres LOA	\$731	\$553 plus \$122 per metre in excess of 22 metres LOA	\$109	<p>If a customer has not complied with the final clean up procedures as notified to them by TasPorts from time to time, then a clean up fee is payable by the customer to TasPorts which is calculated based on:</p> <p>a) TasPorts' labour fees and equipment hire fees (as required) as set out in the Other Services and Other Charges - Equipment parts of this Schedule of Port Charges; and</p> <p>b) any third party fees plus 10%</p> <p>for cleaning up and disposing of any material left at the slip yard.</p>
<b>No. 2 Domain</b>	\$489 plus \$25 per metre in excess of 15 metres LOA	\$366	\$243 plus \$43 per metre in excess of 15 metres LOA	\$100	
<b>No. 3 Domain</b>	\$264	\$95	\$95	\$78	
<b>No. 1 Strahan</b>	\$377	\$95	\$95	\$78	
<b>No. 2 Strahan</b>	\$516 plus \$20 per metre in excess of 15 metres LOA	\$310	\$226 plus \$41 per metre in excess of 15 metres LOA	\$100	
<b>King Island</b>	\$377	\$188	\$127	\$78	
<b>Flinders Island</b>	\$377	\$188	\$127	\$78	

### NOTES:

Weight limitations apply on all slipways.

# SLIPWAYS

## LABOUR RATES

Labour rates applicable to all slips and work carried out on behalf of Clients between the hours of 0730 – 1630, Monday – Friday

**\$ EX GST**

Slipway Supervisor	per hour (minimum of four (4) hours)	116
Labourer – general purpose	per hour (minimum of four (4) hours)	100
All contracted trades people	Invoiced cost plus 10% will be charged back to the client	POA

Labour provided out of hours on weekdays, weekends and public holidays will be available on request.

## OTHER CHARGES – DOMAIN SLIP

**\$ EX GST**

<b>LAY-UP BERTH</b>		
First 24 hours	24 hours	106
After first 24 hours	per day, pro-rata in six (6) hour blocks or part thereof	106
<b>OTHER CHARGES</b>		
Wastewater Treatment System & Maintenance Levy - Domain No. 1	per 24 hours	277
Wastewater Treatment System & Maintenance Levy - Domain No. 2 and No. 3	per 24 hours	96
Workshop space	As determined by the Slipway Supervisor, subject to availability	POA
Pressure washer	per hour	50
Waste oil and sludge removal	If required and arranged by the Slipway Supervisor, the invoiced cost plus 10% will be charged back to the client	POA
Crane hire	If required, a crane will be engaged by the Slipway Supervisor and the invoiced cost plus 10% will be charged back to the client	POA
Telehandler	per hour or part thereof	166





# DEVONPORT AIRPORT - AERONAUTICAL

**\$ EX GST**

## LANDING FEES

Non regular public transport, charter, private operator and itinerant users:

### All Aircraft

Fixed wing and rotary wing per landing	\$25 per 1000kg (or part thereof) of maximum take-off weight  Minimum charge \$35
--	---

### Private Operator and members of Devonport Aero Club - Per Aircraft (non-hangar tenant)

<ul style="list-style-type: none"> <li>• Unlimited landings</li> <li>• Privately owned and operated</li> <li>• Aircraft primarily domiciled at the Devonport Airport</li> <li>• &lt; 2500 kg</li> </ul>	\$565 per annum Or \$166 per quarter
---	---

### Private Operator, non member of Devonport Aero Club - Per Aircraft - POA

## AIRCRAFT PARKING FEES

Non regular public transport, commercial, charter, private operator and itinerant users:

This schedule of fees does not override any agreements made under leasing arrangements or specific agreements entered into with TasPorts.

Main apron area - all aircraft, between 2100-0600 hours	\$30 per night
General Aviation (GA) Area - including grassed areas, between 2100-0600 hours	\$15 per night



# DEVONPORT AIRPORT - AERONAUTICAL

\$ EX GST

## AIRCRAFT STORAGE FEES

### Private Operator - Per Aircraft - Aircraft Only (hangar tenant)

<ul style="list-style-type: none"> <li>• Must be a Devonport Aeroclub member or hangar tenant</li> <li>• Privately owned and operated</li> <li>• Aircraft primarily domiciled at the Devonport Airport</li> <li>• Aircraft &lt; 2000 kg</li> <li>• Parking permitted only in GA area</li> </ul>	\$350 per annum or \$100 per quarter
---	---

### Private Operator - Trailerised Aircraft Storage - Per Trailerised Aircraft Storage Unit

<ul style="list-style-type: none"> <li>• Must be a Devonport Aeroclub member or hangar tenant</li> <li>• Privately owned and operated</li> <li>• Aircraft primarily domiciled at the Devonport Airport</li> <li>• Aircraft &lt; 2000 kg</li> <li>• Parking permitted only on GA grassed area and at location determined by Airport Operator</li> </ul>	\$430 per annum or \$125 per quarter
--	---

### Commercial Operator - Per Aircraft - Aircraft Only

<ul style="list-style-type: none"> <li>• Must be a Devonport Aeroclub member or hangar tenant</li> <li>• Aircraft &lt; 2000 kg</li> <li>• Parking permitted only on GA area and at location determined by Airport Operator</li> </ul>	\$499 per annum or \$134 per quarter
---	---

### Commercial Operator - Trailerised Aircraft Storage - Per Trailerised Aircraft Storage Unit

<ul style="list-style-type: none"> <li>• Must be a Devonport Aeroclub member or hangar tenant</li> <li>• Aircraft &lt; 2000 kg</li> <li>• Parking permitted only on GA grassed area and at location determined by Airport Operator</li> </ul>	\$535 per annum or \$155 per quarter
---	---





**TASMANIAN PORTS  
CORPORATION PTY LTD  
(TASPORTS)**

ABN 82 114 161 938  
www.tasports.com.au  
1300 366 742

**LAUNCESTON OFFICE**

90 Willis Street, Launceston\*  
PO Box 1060, Launceston 7250

**HOBART OFFICE**

Levels 5 & 6, Marine Board Building,  
1 Franklin Wharf, Hobart  
GPO Box 202, Hobart 7001

\* Registered Office

**PORT OF BELL BAY**

Mobil Road, Bell Bay  
Locked Bag 4, George Town 7253

**PORT OF BURNIE**

Port Road, Burnie  
PO Box 216, Burnie 7320

**PORT OF DEVONPORT**

48 Formby Road, Devonport  
PO Box 478, Devonport 7310

**PORT OF HOBART**

Ground Floor,  
Port Tower Building, Hobart  
GPO Box 202, Hobart 7000

**PORT OF STANLEY**

Wharf Road, Stanley 7331

**PORT OF STRAHAN**

The Esplanade, Strahan 7468

**DEVONPORT AIRPORT**

Airport Road, Devonport 7307

**FLINDERS ISLAND**

Lady Barron, Flinders Island 7255

**KING ISLAND**

285 Grassy Harbour Road,  
Grassy, King Island  
PO Box 341, Currie, King Island 7256

**PRICING AND NEW BUSINESS ENQUIRIES**

Telephone: 1300 366 742

Email: [commercial@tasports.com.au](mailto:commercial@tasports.com.au)

